

Oct 27th, 10:00 AM - 12:00 PM

Challenge 1: Roles of Universities in Resilience Planning and Emergency Response/Preparation

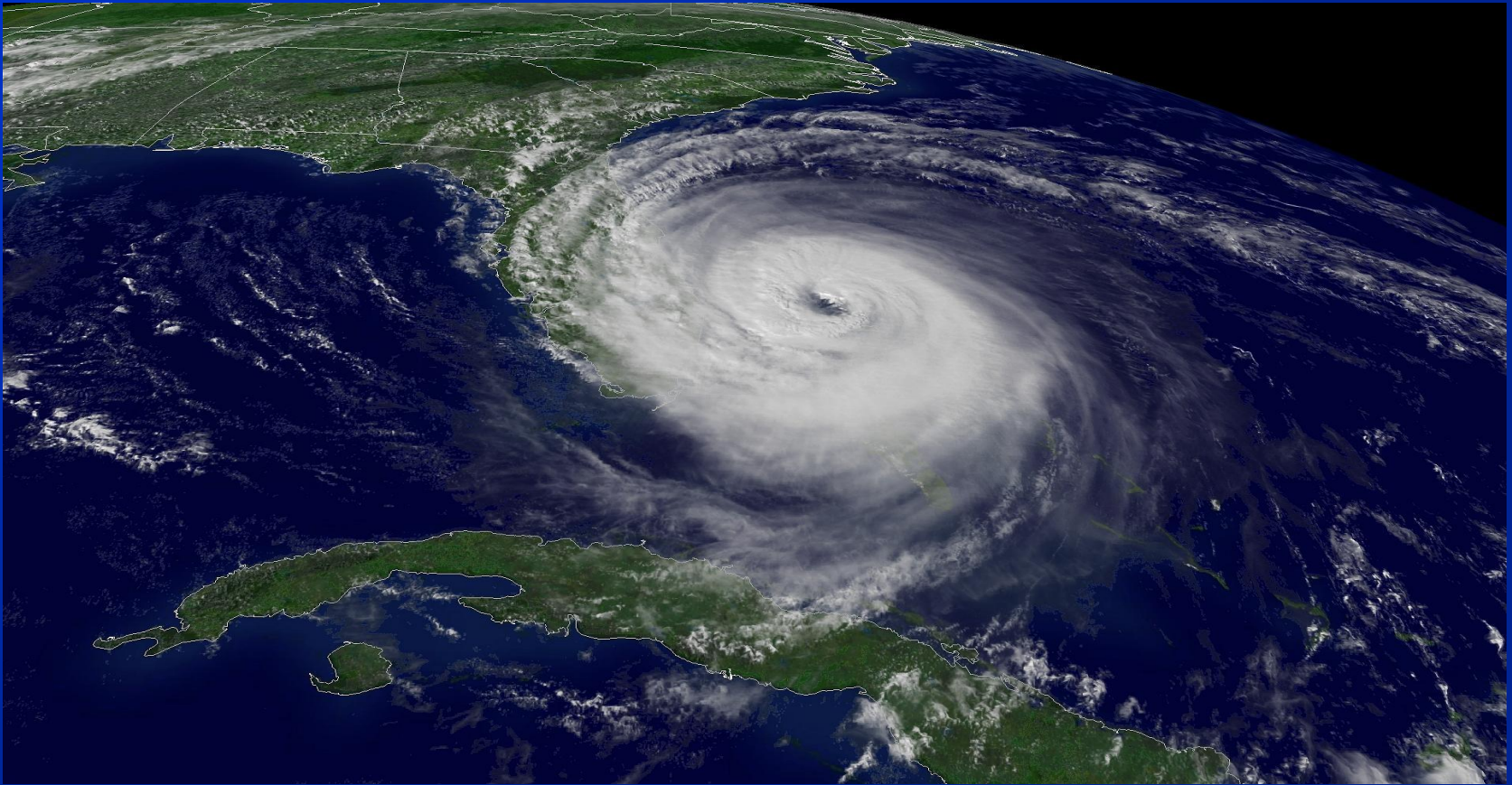
Miguel Ascarrunz
Emergency Management Division, Broward County, FL

Follow this and additional works at: <https://scholarworks.uno.edu/resilience>

Ascarrunz, Miguel, "Challenge 1: Roles of Universities in Resilience Planning and Emergency Response/Preparation" (2015). *Coastal Resilience Workshop*. 2.
<https://scholarworks.uno.edu/resilience/2015/day2/2>

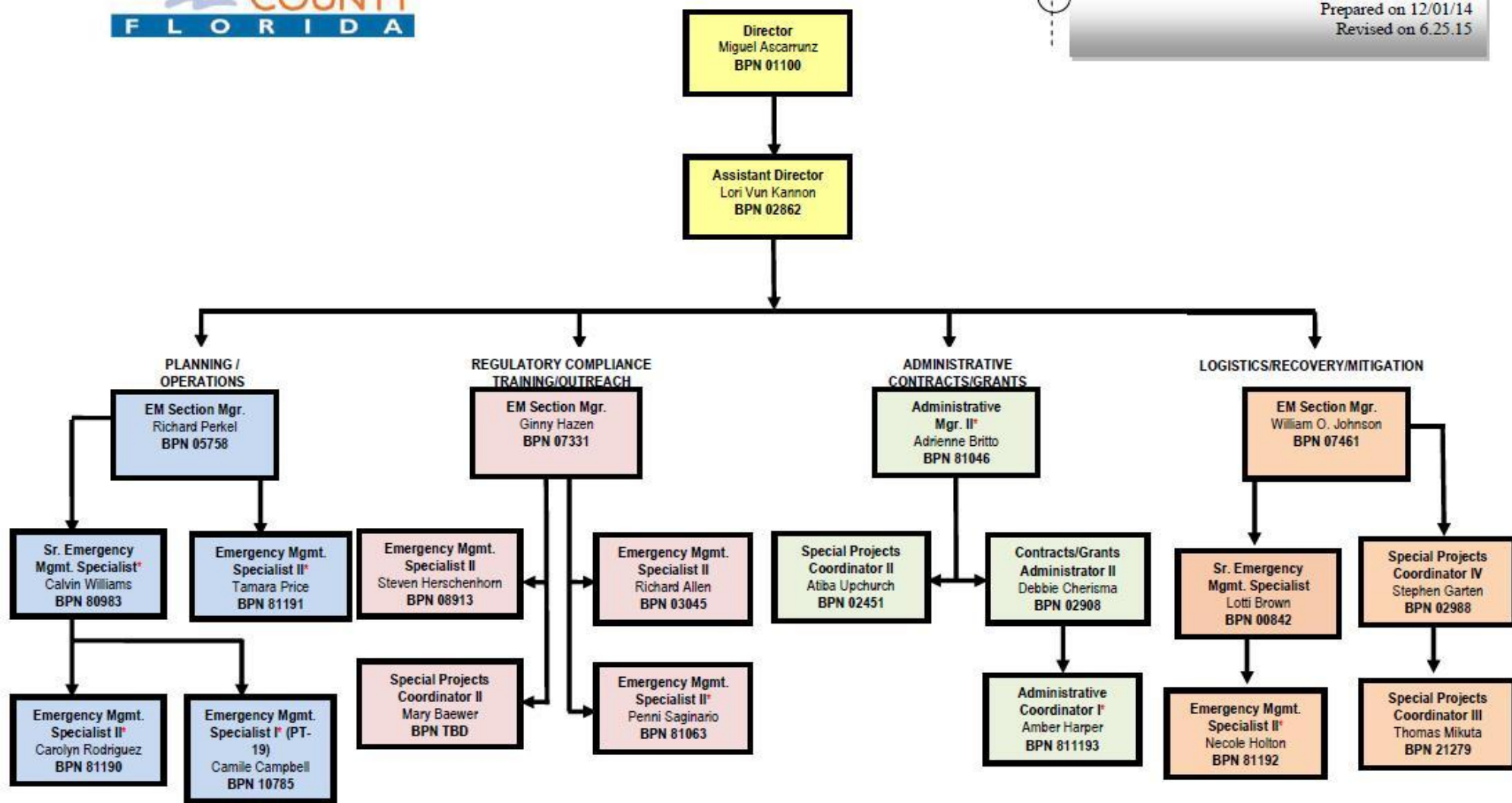
This Event is brought to you for free and open access by ScholarWorks@UNO. It has been accepted for inclusion in Coastal Resilience Workshop by an authorized administrator of ScholarWorks@UNO. For more information, please contact scholarworks@uno.edu.

SURA 2nd Workshop on Coastal Risk and Resilience



Broward Emergency Management Division

Miguel Ascarrunz, Director

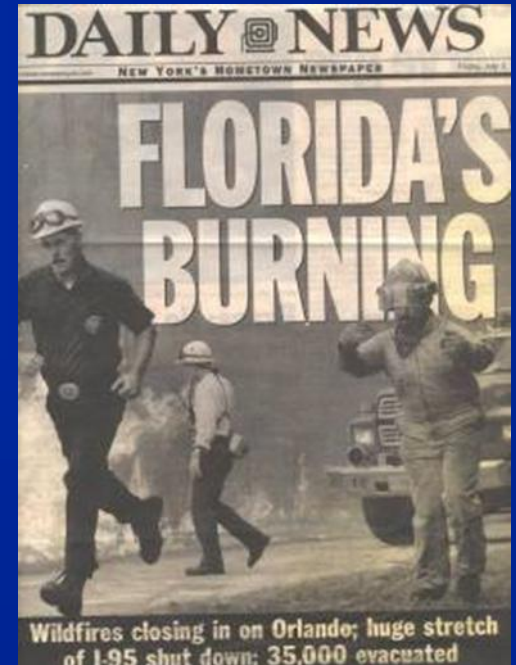
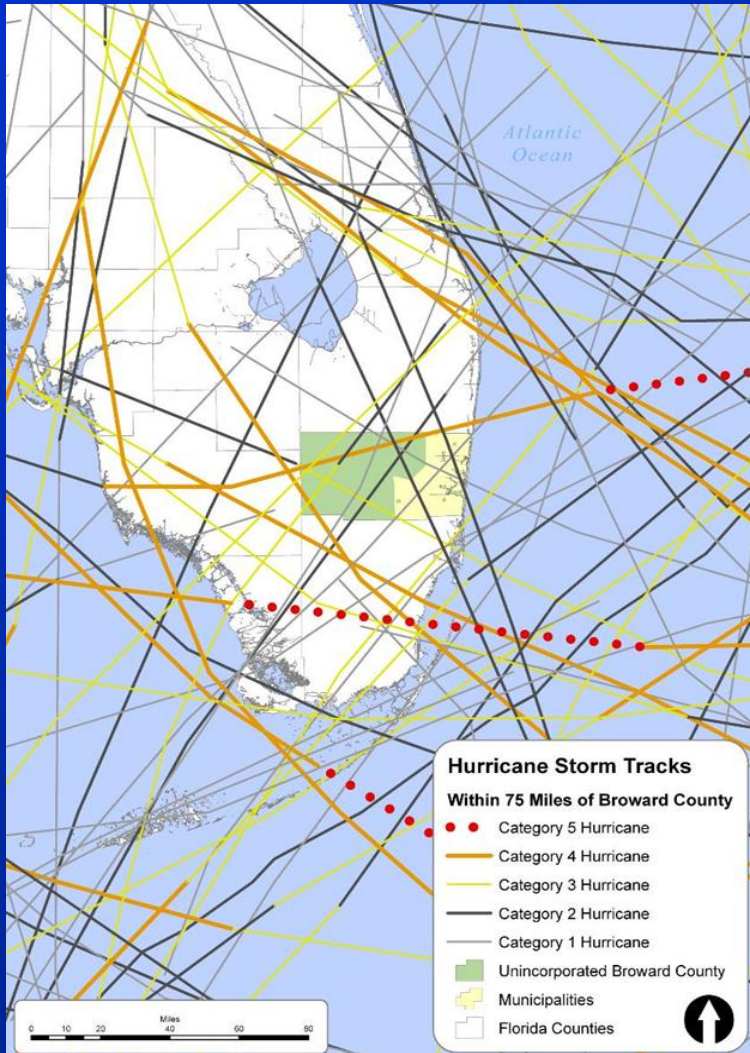


* Grant Funded Positions

Emergency Management Mission

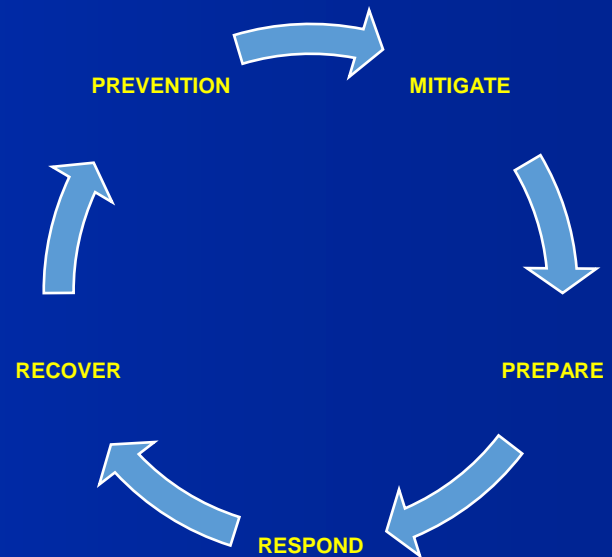
- ❑ Prepare and coordinate response to events and incidents that occur in Broward County or that affect Broward County
- ❑ Facilitate Broward County government operations and essential services during emergencies or extraordinary occurrences
- ❑ Support all phases of Emergency Management
 - ❑ Prevention
 - ❑ Preparation
 - ❑ Response
 - ❑ Recovery
 - ❑ Mitigation

All Hazards Readiness



Emergency Management Functions

- Prevention/Mitigation
- Planning/Preparedness
- Response
- Recovery



AT ALL TIMES:

Resiliency—the ability to withstand, adapt, and recover



BROWARD COUNTY
EMERGENCY OPERATIONS CENTER

201

SHERIFF

Overview of the EOC

- ❑ **Four levels of operation:**
 - *Routine Monitoring*
 - *Level 3 (monitoring and assessment)*
 - *Level 2 (partial activation)*
 - *Level 1 (full activation)*
- ❑ **Hours of operation are determined by the event or incident**
- ❑ **Approximately 200 workstations**

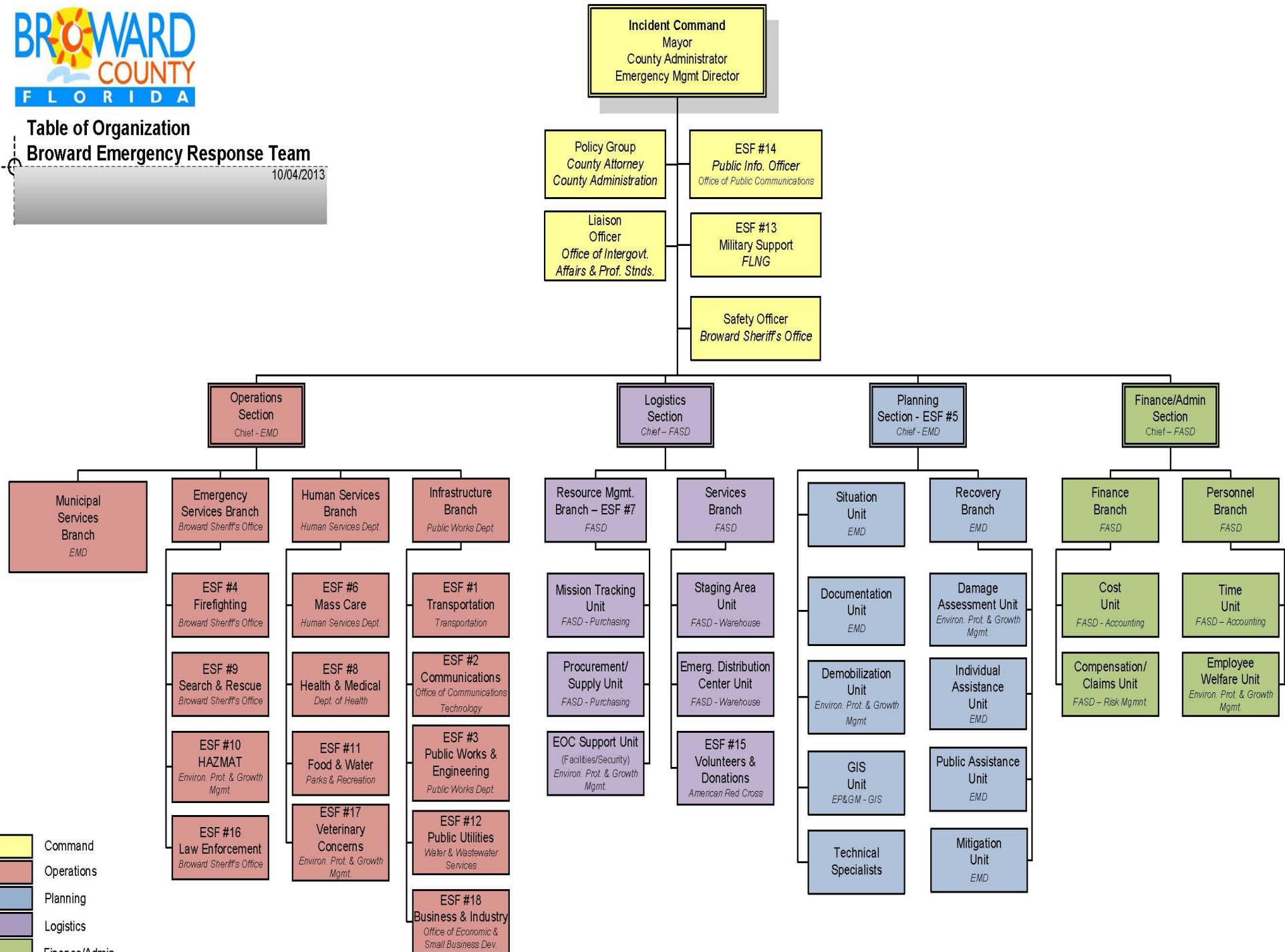
Overview of the EOC

- ❑ **Broward Emergency Response Team (BERT)**
- ❑ **Incident Command System (ICS) Organization**
- ❑ **18 Emergency Support Functions (ESFs)**
- ❑ **31 Municipal Representatives and the Seminole Tribe of Florida**
- ❑ **Geographic Information System (GIS) component**
- ❑ **Media Room for Press Conferences**
- ❑ **Broward County Call Center (Hotline)**



Table of Organization Broward Emergency Response Team

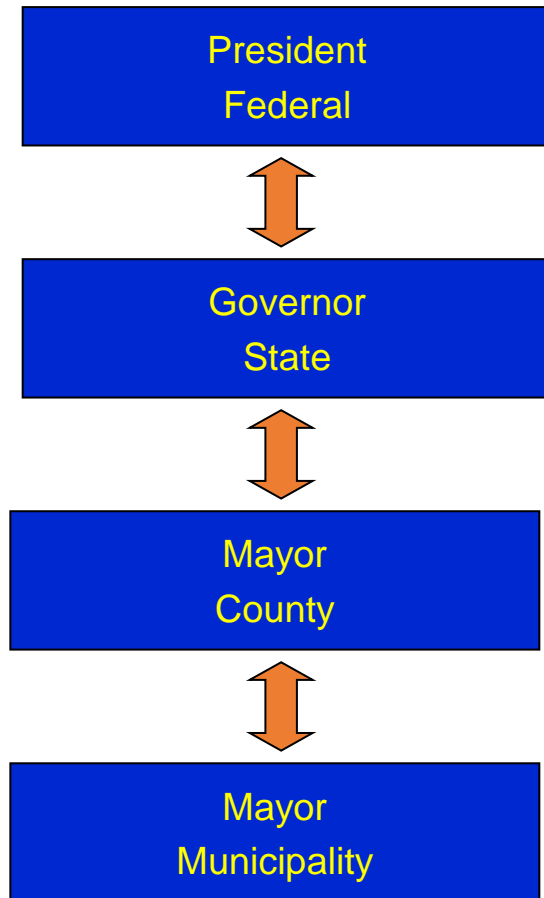
10/04/2013



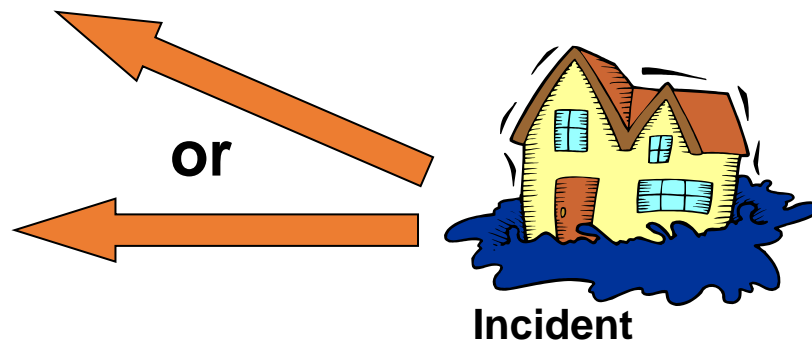
Initial Emergency Activities

- ☐ Emergency Management disseminates advisory bulletins.
- ☐ If the threat escalates, Broward Emergency Response Team (BERT) conference calls are conducted.
- ☐ The EOC is activated by decision of the County Administrator and the Emergency Management Director. The activation can be a partial activation or a full activation. Examples:
 - ☐ Natural Disasters – hurricanes, tornadoes
 - ☐ Other emergencies – Pandemic, HAZMAT incident, Terrorism
 - ☐ Events – Super Bowl, elections
- ☐ Call Center can be activated prior to an EOC activation.

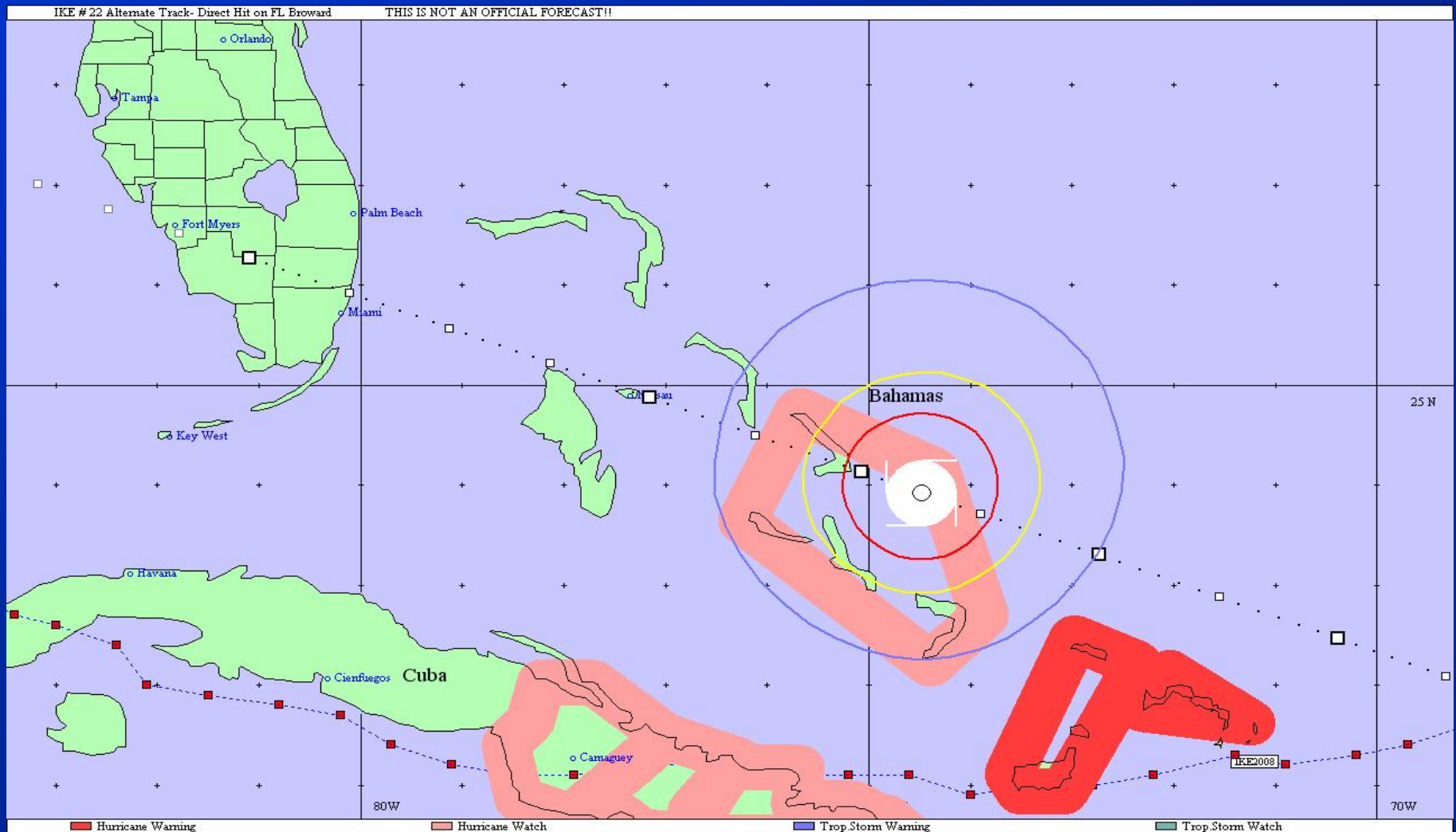
Requesting Assistance



Under the Federal Stafford Act and Florida Statute Chapter 252, only the Elected Leadership has the authority to Declare Emergencies. Only the Governor may request assistance from the President.



HURREVAC Decision Support Tool



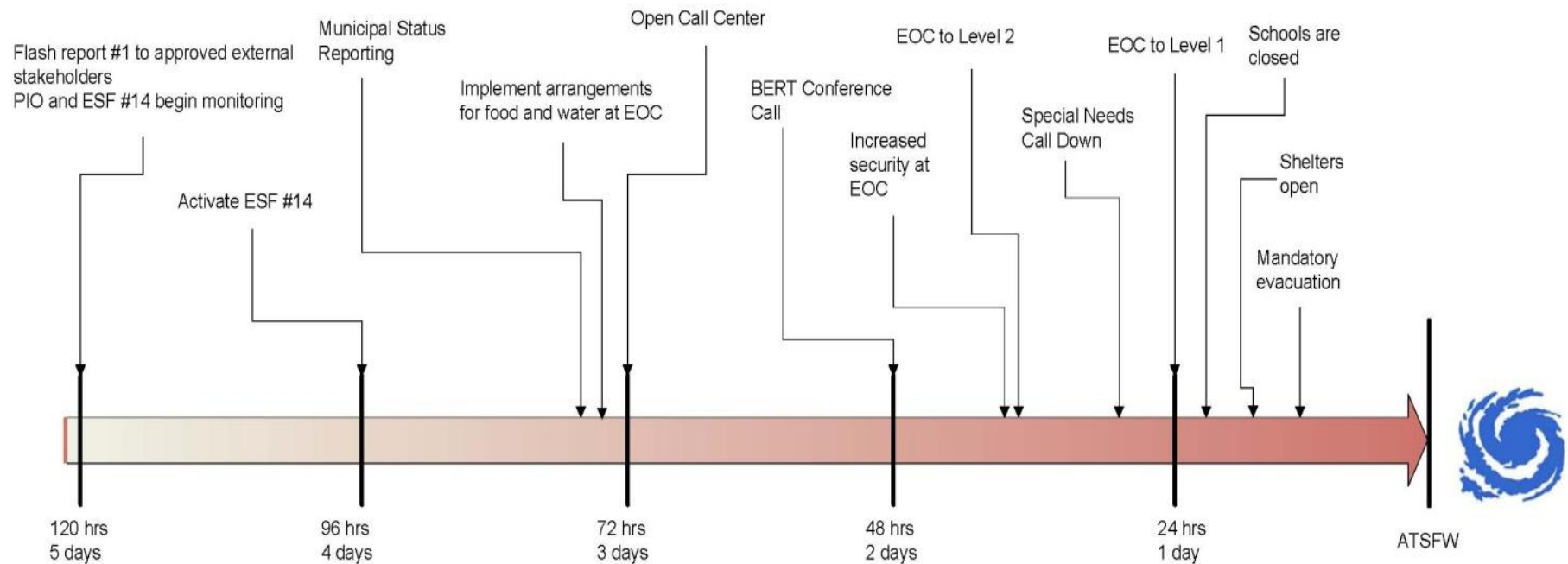


Storm Action Lead Time


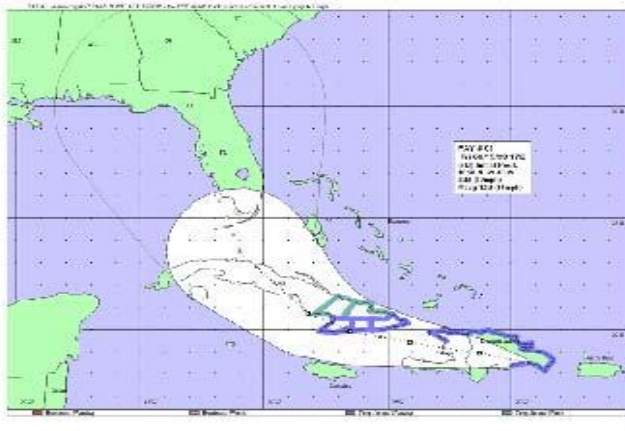
8/1/2008



Plan A: Category 1-2 storm (12-hour evacuation time)



FLASH Report

		Broward County Emergency Operations Center FLASH REPORT #02	CONTACT INFORMATION: Standard hours phone: 954.831.3900 Non-standard hours: 954.765.5100 FAX: 954.382.5805 ESF5@broward.org
1. INCIDENT NAME Tropical Storm Fay	2. DATE August 15, 2008	3. TIME 1800 hours	
4. BROWARD EOC ACTIVATION LEVEL Not activated; Level 3 - monitoring	5. LOCAL STATE OF EMERGENCY DECLARED? None.	6. PREPARED BY Broward EMD Duty Officer	
7. SUMMARY OF CURRENT SITUATION AND ACTIONS Tropical wave 92L has been upgraded to a tropical storm (Fay). Model guidance and the forecast track has shifted westward putting Broward County in the cone of 5-day forecast error with arrival of tropical force winds effecting Broward County approximately on Tuesday, August 19, at 0400 hours. At that point, Fay is forecast to be a tropical storm with max. sustained winds of 60 mph. We will have additional conference calls with the National Weather Service, National Hurricane Center, and State EOC on Saturday, August 16 th in the morning. After these calls, we will be able to make more definitive decisions regarding the timeline below. BERT and Municipal conference calls are scheduled for 12:00 PM and 12:30 PM, respectively, for both Saturday and Sunday. If we activate to level 2 on Sunday, the following ESFs will be expected to send representatives to the EOC: 1, 3, 4, 5, 6, 7, 8, 11, 14, 16, 18, and 19. The Incident Command General Staff will also be required to be present at the EOC. We plan on activating the call center on Sunday at 12:00 noon. Meanwhile, public safety agencies should monitor the storm and make necessary preparations in accordance with the table below.			
IMPORTANT NOTE: The following table identifies our <i>tentative</i> schedule based on the current NHC advisory. These estimated dates and times have not been confirmed and are likely to change based on the next NHC advisory. <i>These dates and times are to be used merely as a planning guideline.</i> The information contained in this advisory is to inform public safety agencies and is <i>NOT</i> intended for general, public, or media distribution. Please do not distribute this information to the general public or the media – the general public may be referred to the Broward Call Center at 954.831.4000.			
Initial BERT conference call	Saturday, August 16, 2008	1200 hours	
Municipal EOC conference call	Saturday, August 16, 2008	1230 hours	
Broward EOC activated to Level 2 (partial)	Sunday, August 17, 2008	1600 hours	
Prepare for possible school closing on Monday	Monday, August 18, 2008	--	
Broward EOC activated to Level 1 (full-scale)	Monday, August 18, 2008	0700 hours	
Open Regional & Special Needs shelters	Monday, August 18, 2008	1200 hours	
Begin mandatory evacuation	Monday, August 18, 2008	1600 hours	
Estimated arrival of tropical storm force winds	Tuesday, August 19, 2008	0400 hours	
8. INCIDENT GRAPHICS AND ADVISORY <div style="display: flex; align-items: flex-start;">  <div style="margin-left: 10px;"> <p>At 5:00 pm, the center of Tropical Storm Fay was located near latitude 18.5N, longitude 69.4W, or about 35 miles east of Santo Domingo in the Dominican Republic and about 395 miles east-southeast of Guantanamo, Cuba.</p> <p>Fay is moving toward the west near 14 mph. A general motion toward the west-northwest is expected during the next day or so. On the forecast track, the center of Fay will cross Hispaniola tonight and Saturday, and pass near or over eastern Cuba Saturday night and Sunday. Maximum sustained winds are near 40 mph with higher gusts, mainly over water to the north and east of the center. Little change in strength is forecast during the next 24 hours. Tropical storm force winds extend outward up to 65 miles.</p> <p>Fay is expected to produce total rainfall accumulations of 4 to 8 inches over Hispaniola and eastern Cuba with isolated maximum amounts of 12 inches. These rains may produce life-threatening flash floods and mudslides.</p> </div> </div>			
9. APPROVED BY Bill Johnson, RN		10. TITLE BEMD, Assistant Director	11. DATE/TIME August 15, 2008/ 1800 hours

Evacuation Zones

- County Emergency Management Directors set the evacuation zones, under their FS 252 responsibility to make plans to protect the population.
- The surge zones are used as one of the basis to create evacuation zones used by each county in their public safety planning.



PLAN A

Typically a Category 1-2 hurricane.

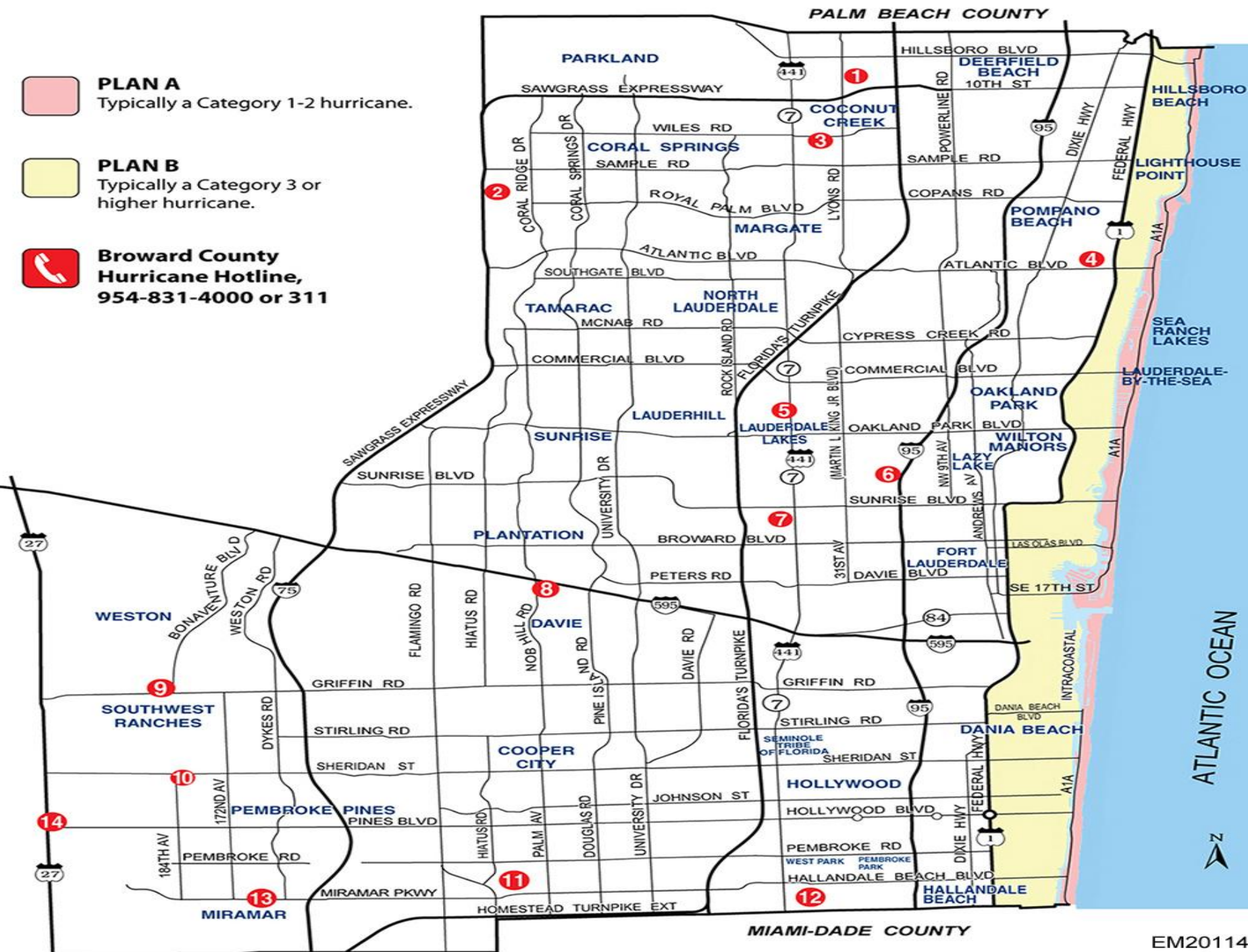


PLAN B

Typically a Category 3 or higher hurricane.



**Broward County
Hurricane Hotline,
954-831-4000 or 311**



Mandatory Evacuation Plans

PLAN A

- Typically a **Category 1-2** hurricane:

All residents in the area east of the
Intracoastal Waterway

PLAN B

- Typically a **Category 3, 4 or 5** hurricane:

All residents in the area east of U.S. 1

and.....

**All mobile home residents must evacuate
under either PLAN A or PLAN B.**

**Residents may also be ordered to evacuate if
tropical storm conditions warrant.**

*Those persons located in low lying areas or beside
tidal bodies of water should seek shelter elsewhere if
conditions warrant.*

Mandatory Evacuation Areas

Hurricane Evacuation Zone	Resident Population	Percentage of Total Population	Total Housing Units	Percentage of Total Housing Units
Categories 1 and 2	46,205	2.64 %	55,508	6.85%
Categories 3, 4 and 5	96,862	5.54%	66,517	8.20%
Categories 1 - 5	143,067	8.18%	122,025	15.06%

Home Damage Assessment Program

Windows Internet Explorer provided by BEMU

http://www.broward.org/hurricane/Pages/Default.aspx

Convert Select

Favorites Web Slice Gallery Yellow Pages Local Direct... Office Online Home Page Microsoft Office Microsoft Corporation Google Free Hotmail fema The National Flood I...

Hurricane

Microsoft Translator | Google Translate

BROWARD COUNTY FLORIDA

Home County Commission Living in Broward Doing Business Visiting Search

Broward County > Hurricane Printer Friendly

Hurricane

Hurricane PREPAREDNESS

Evacuation & Shelter Information

Tracking the Storm

A-Z Hurricane Guide

Hurricane Kit Shopping Guide

Emergency Volunteer Opportunities

Links

Emergency Management Division

Broward County - Hurricane Preparedness

In the News

Residents Encouraged To Get Connected!

To stay informed, residents are encouraged to register now for the Broward County Hurricane Update eMail. To receive updates on your cell phone or email, follow us on Twitter. To become a follower, visit twitter.com/ReadyBroward. For more information on hurricane preparedness, call the Broward County Call Center at 954-831-4000 or 311.

New Registration for Special Medical Needs Shelters

There is a change in medical provider at the Special Medical Needs Shelters. New applications are required for the 2010 Hurricane Season. [More...](#)

Residents Wanted to Participate in Home Damage Assessment Program

Broward County is introducing a new program to help quickly identify areas of devastation, even before damage assessment teams are able to canvass the County. It's easy and a great service to the community. Learn how you can participate...

READY. SET. SAFE.

The Official Broward County Hurricane Preparedness Guide is filled with useful information, maps, telephone numbers and web site addresses that help you be ready - set - safe for hurricane.

Twitter
FOLLOW ReadyBroward

Subscribe to Hurricane Updates

Home Damage Assessment Program

Generator-Ready Businesses

Vulnerable Resident Preparedness

Resources

- A to Z Hurricane Guide
- The Official Broward County Hurricane Preparedness Guide

Report Your Damage

The screenshot shows a Windows Internet Explorer browser window displaying the Broward County Hurricane Preparedness website. The address bar shows the URL <http://www.broward.org/hurricane/damageassessment.htm>. The website header includes the Broward County Florida logo and the title "Hurricane Preparedness". A search bar is visible on the right. The main content area is titled "Broward County's Home Damage Assessment Program". It explains that the program helps quickly identify areas of devastation before damage assessment teams arrive. It asks residents to report damage to their home as soon as it is safe to go outside by calling 3-1-1 or logging on to the Broward County Web site at www.broward.org/hurricane and clicking on the Home Damage Assessment Program. A section titled "Here's how it works:" lists five steps: 1. Print the Home Damage Assessment photos and keep them handy. 2. Survey the damage to your home after the storm passes. 3. Compare your home to the four homes pictured on the page you printed out, selecting the one that best represents the condition of your home for damage level and/or flood level. 4. Call the Broward County Hurricane Hotline at 3-1-1 to phone in a damage assessment report. 5. Provide your street address, city and zip code, and the number of the picture that best represents the level of damage to your home. A reminder states that reports will only be accepted if the user has access to the photos. A final note states that reports provide a critical early indication of where major damage has occurred but do not replace normal grid-by-grid assessments. A link "Report Your Damage" is provided at the bottom of the main content area. The left sidebar contains links to various resources: Evacuation Map & Shelter List, Tracking The Storm, A-Z Hurricane Guide, Hurricane Kit Shopping Guide, Community Emergency Response Team (CERT), Links, Hurricane Preparedness Home, and Emergency Management Home. The Windows taskbar at the bottom shows the Start button and several open applications, including Kingston (F:), GF Condensed..., SMBus09 GF [...], Broward Emer..., Broward Count..., and Document1 - M... The system clock shows 10:46 PM.

Broward County - Hurricane Preparedness - Windows Internet Explorer

<http://www.broward.org/hurricane/damageassessment.htm>

Broward County - Hurricane Preparedness

BROWARD COUNTY FLORIDA

Hurricane Preparedness

Search

[Home](#) [Find An Agency](#) [A to Z Guide](#) [Language Chooser](#)

Broward County's Home Damage Assessment Program

Broward County is introducing a new program to help quickly identify areas of devastation, even before damage assessment teams are able to canvass the County. It's easy and a great service to the community!

The Home Damage Assessment Program asks residents to report hurricane damage to their home as soon as it is safe to go outside by calling 3-1-1 or logging on to the Broward County Web site at www.broward.org/hurricane and click on Home Damage Assessment Program.

Here's how it works:

1. Before the storm, print the [Home Damage Assessment photos](#) and keep them handy for reference.
2. After the storm passes and it's safe to go outdoors, survey the damage to your home.
3. Compare your home to the four homes pictured on the page you printed out, and select the one that best represents the condition of your home for damage level and/or flood level. It doesn't matter if you live in a single family home, condo, townhouse, apartment, duplex or mobile home.
4. Call the Broward County Hurricane Hotline at 3-1-1 to phone in a damage assessment report. If you still have power and access to the Internet, return to this page and click on the [Report Your Damage](#) below.
5. You will be asked to provide your street address, city and zip code, and the number of the picture that best represents the level of damage to your home.


Remember, you must have access to the photos to make a report, as Hurricane Hotline call takers will only be able to accept numbers "1-4" as damage levels and "5-6" for flood levels.

Resident reports will provide a critical early indication of where major damage has occurred. These reports do not constitute a request for individual assistance and do not replace the normal grid-by-grid assessments performed by County assessment teams.

[Report Your Damage](#)


start KINGSTON (F:) GF Condensed... SMBus09 GF [...] Broward Emer... Broward Count... Document1 - M... 10:46 PM


Data Entry Screen


**Neighborhood Damage Assessment**


1 Report the Address
House Number: Direction: Street Name: Street Type:
City: State: ZIP:

2 Select the Damage/Flood Level


NO/MINOR DAMAGE HABITABLE


MAJOR DAMAGE HABITABLE


MAJOR DAMAGE UNINHABITABLE


DESTROYED

Damage Level:

Flood Level:

Submit

Reset

[Terms of Use](#) • [Contact Us](#)

What the Pictures Say



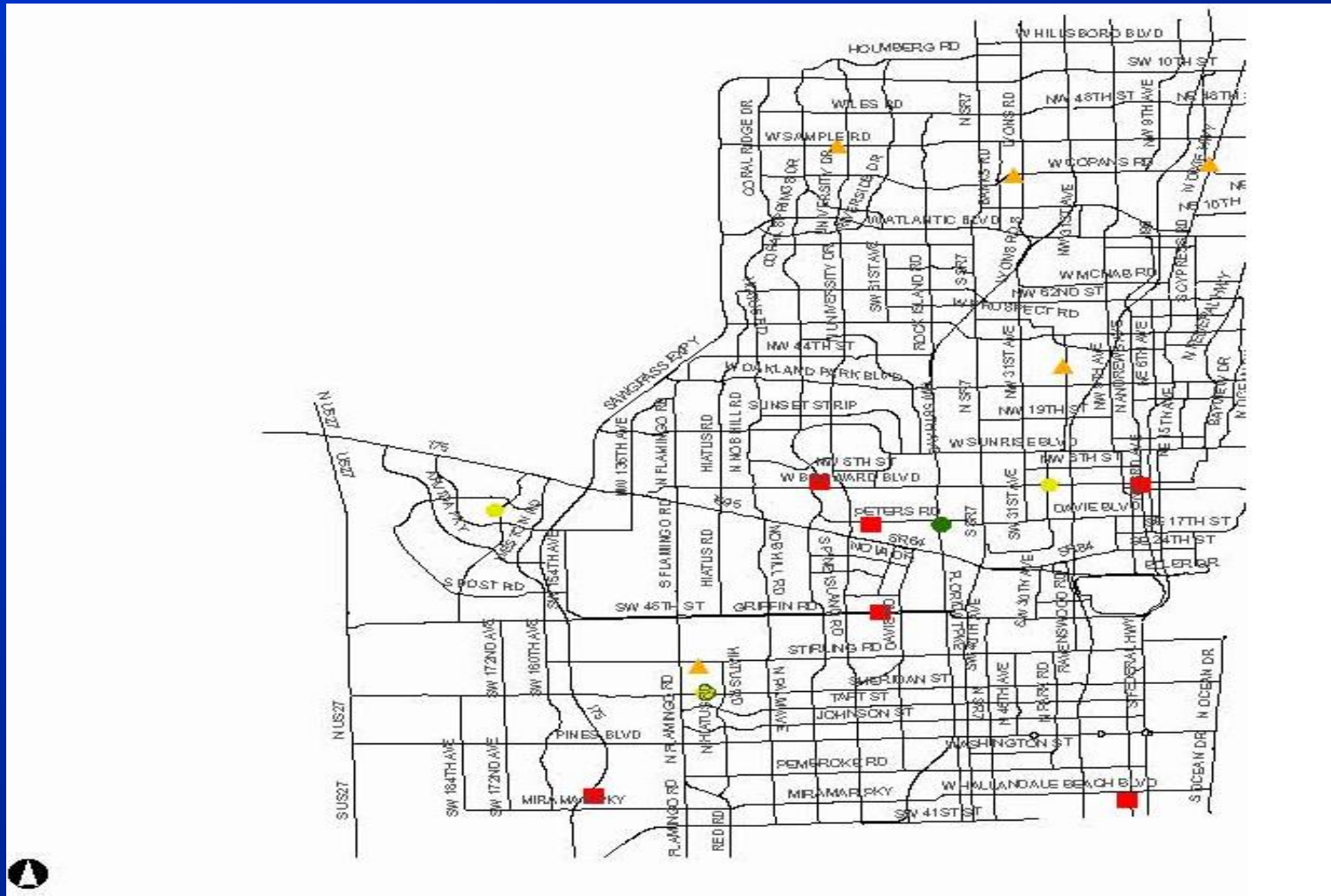
With Blue Tarps we can minimize housing needs



SAR and long-term housing

Need long-term housing

Data Display Screen



What if I don't have to evacuate?

#1 Option – Shelter in Place

But if you go to a shelter bring:

- Pillow and blanket (cots are not provided in primary shelters)
- At least a three-day supply of medications and supplies
- Personal items (change of clothing, extra pair of eyeglasses, etc.)
- Non-perishable snack foods
- Games for your children



About Pets...

*Pets are not allowed in shelters
except the pet friendly shelter.
Service Animals are allowed in all
shelters.*

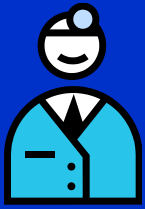


For more information, contact:

Humane Society of Broward County

954-989-3977

- **Pre-registration is required**
- **Must reside in either Plan A, Plan B or in a mobile home**



Special Medical Needs Shelter Broward County Elderly and Veterans Services 954-537-2888 or TTY 954-537-2882

Pre-registration is open throughout the year and is not mandatory but strongly encouraged to ensure that the shelter will be adequately prepared for those who need this service. All residents seeking shelter in a Special Medical Needs facility will be reviewed on an individual basis to determine the best placement for their needs. A person with Special Medical Needs is someone who:

- **Has minor health/medical conditions that require professional observation, assessment, and maintenance**
- **Requires assistance with personal care and/or assistance with medications but does not require hospitalization**
- **Needs medications and/or vital sign readings and is unable to do so without professional assistance.**



Special Medical Needs Shelter Broward County Elderly and Veterans Services 954-537-2888 or TTY 954-537-2882

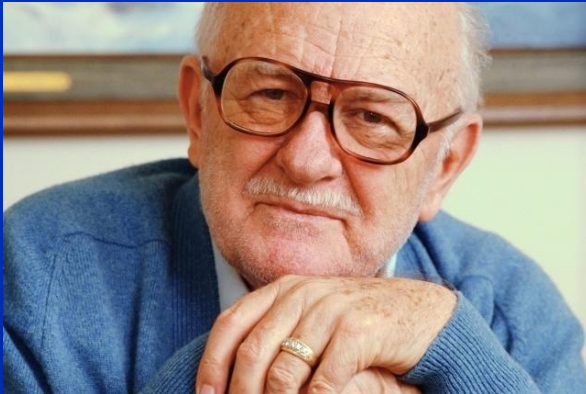
Reasonable modifications will be made for shelter residents with disabilities in accordance with the Americans with Disabilities Act (ADA). A person needing transfer assistance, sign language interpretation and other auxiliary aids, or a quiet zone for a cognitive disability or mental health needs should call (954) 537-2888 or TTY (954) 537-2882.

- Residents are encouraged to bring their caregiver, and family members are welcome at all shelter sites.
- The Oxygen-Dependent Shelter can accommodate a limited number of residents who require 24-hour oxygen or 24-hour electrical power.
- Residents with service animals accompanying them are welcome at all shelter sites.

Vulnerable Population Registry

*...a joint partnership between Broward County
and its municipalities*

www.broward.org/atrisk

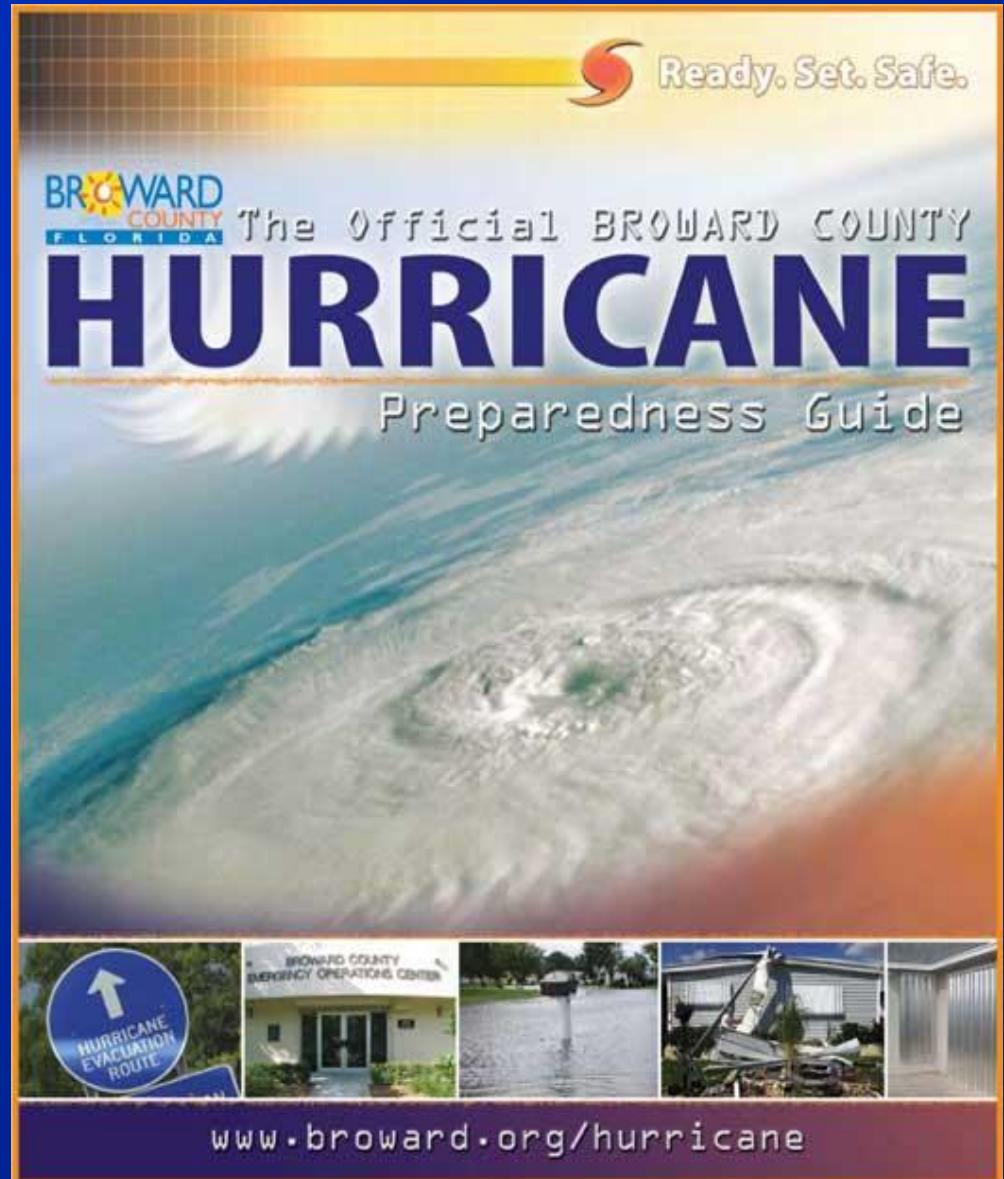


VPR: Who is it for?

- People who would be at risk after a storm, especially those with a disability, frailty or health issue.
- Allows emergency workers to plan a better response during the recovery effort.
- Does not guarantee that you will be provided services or placed on a priority list.
- Register online at www.broward.org/atrisk or by calling the Broward County Call Center at (954) 831-4000.

Preparedness is a shared responsibility!

- **#1 Make a Plan**
- **#2 Build a Kit**
- **#3 Be Informed**
- **#4 Get Involved**



Broward Emergency Management Division

Miguel Ascarrunz, Director

(954) 831-3900

www.broward.org/emergency

Ready South Florida

www.readysouthflorida.org

Florida Division of Emergency Management

www.FLGetAPlan.com

FEMA

www.fema.gov

