

University of New Orleans

ScholarWorks@UNO

DRU Workshop 2011 Presentations - Disaster
Resistant University Workshop: Building
Partnerships in Mitigation

Conferences and Workshops

2-2011

Higher Education Emergency Management Program Accreditation: Seeking the "Holy Grail"

Steve Charvat

University of Washington - Seattle Campus


Follow this and additional works at: <https://scholarworks.uno.edu/dru2011>

Recommended Citation

Charvat, Steve, "Higher Education Emergency Management Program Accreditation: Seeking the "Holy Grail"" (2011). *DRU Workshop 2011 Presentations - Disaster Resistant University Workshop: Building Partnerships in Mitigation*. Paper 15.

<https://scholarworks.uno.edu/dru2011/15>

This Presentation is brought to you for free and open access by the Conferences and Workshops at ScholarWorks@UNO. It has been accepted for inclusion in DRU Workshop 2011 Presentations - Disaster Resistant University Workshop: Building Partnerships in Mitigation by an authorized administrator of ScholarWorks@UNO. For more information, please contact scholarworks@uno.edu.



Higher Education Emergency Management Program Accreditation *Seeking the “Holy Grail”*



@ UNO DRU Workshop
Wednesday
February 16, 2011

Presented By:
Steve Charvat, CEM, MPA



“University hospitals are accredited. Campus police departments are accredited, entire academic programs of higher education receive accreditation. But what about the program(s) that protect and safeguard the lives of those working, living, learning and visiting on campuses?? Emergency management accreditation programs are out there, but have yet to be applied to IHE’s. Today, I will discuss some national & international programs and standards & provide a “preview” of what’s in-store for colleges and universities.”



Our Lunchtime “*Syllabus*”

WHY

...should a university even seek accreditation?

WHO

...should/would be involved?

WHAT

... programs are out there to be considered?

WHERE

... do I Apply and Learn More?

WHEN

... should I start the accreditation process?

HOW

... can I prepare for accreditation?



IHE = Institution of Higher Education
(College or university)



Let's Start out with a Quick
POP QUIZ!



Instructions:

- Listen carefully to the following 10 oral questions
- Keep track of your **YES** replies
- Be **HONEST** in your tally
- Finger counting is allowed!



YOUR Scores*

9-10

Congratulations! You and your campus are ready for any disaster.

7-8

With a little work, and fine-tuning, your institution can get to the TOP.

4-6

Time to get to work! ... but all is not lost. You need to re-work your entire crisis plan(s) now.

0 - 3

**HEAD FOR
THE HILLS!**



Before We get Started, Some Statistics

Why a College campus is a “*different animal*” than a typical city



- The USA has the 2nd largest #s of IHEs in the world (nearly 6,000 in 2008)
 - Highest # of IHE students in the world (Approx. 14 million in 2007/08).
- At any one time during a typical school day, nearly 30% of the US population is at School (K-18)
- IHE's have a much more diverse population than the community at-large
- “Vatican within Rome” Analogy



Some Preparedness Statistics



Survey of 100 U.S. & Canadian companies with \$1B+ annual revenues

- 96% had operations exposed to natural disasters
- Only 52% had prepared against loss due to a hurricane
- 37% considered themselves protected against
 - Flooding
 - 29% had taken 'adequate' measures against earthquake
- Less than 21% were concerned about the potential for a negative impact on corporate bottom line resulting from a natural disaster

FM Global, 2008

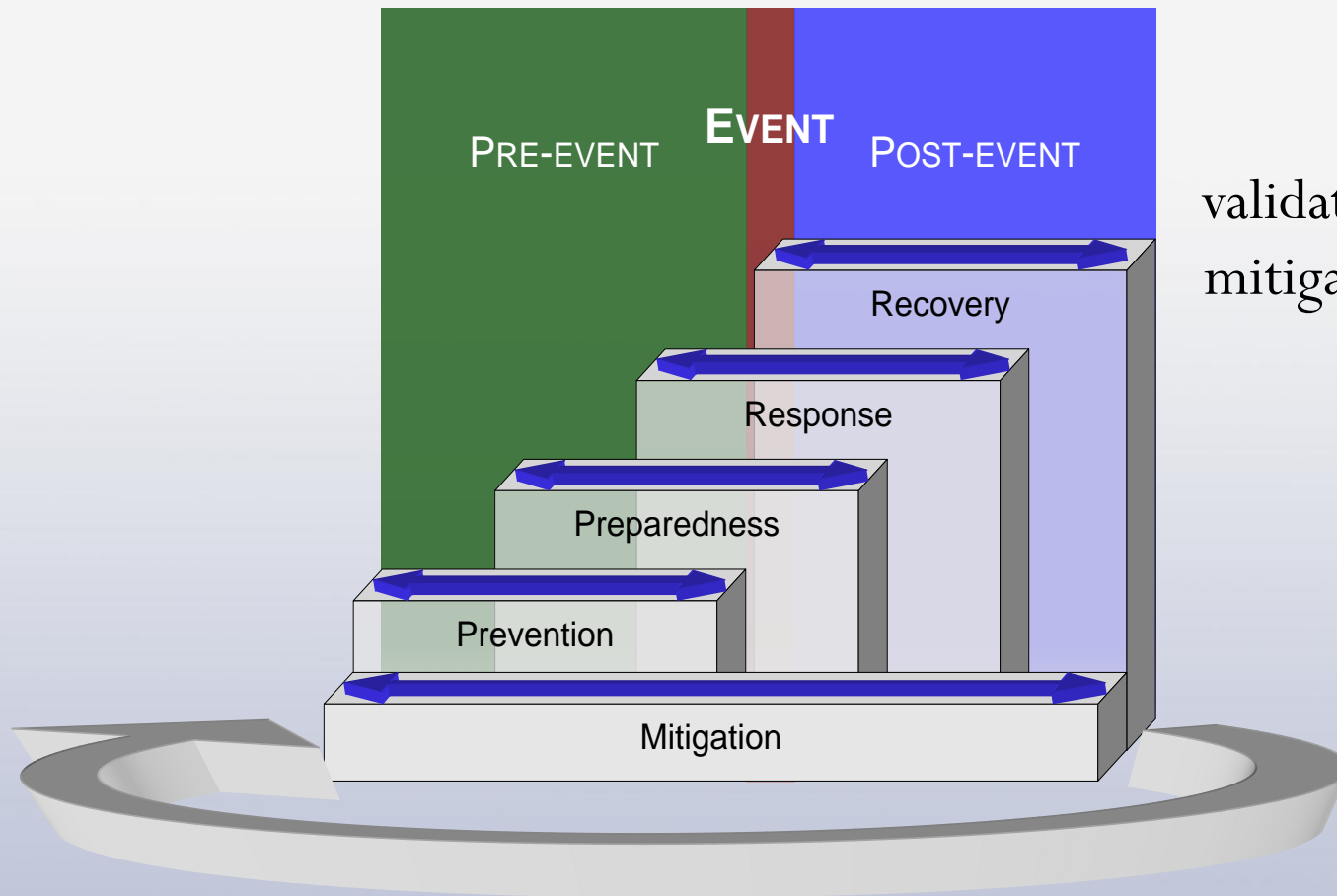


What is Accreditation ?

- *Certification of competence in a specified subject or areas of expertise, and of the integrity of an agency, organization, firm, group, or person, awarded by a duly recognized and respected accrediting organization.*



Mitigation as the Foundation of Emergency Management



Accreditation will validate and evaluate your mitigation efforts as a key component of your campus safety plans



GOOD NEWS:

For most higher education organizations, there have not been a large number of major disasters or emergencies



BAD NEWS:

Because our emergency/disaster systems are not used that often, colleges and universities may not be aware of what to do before, during or after a disaster and generally have no “standard” by which to measure their performance metrics.





THANK YOU!!!



Lessons from Hurricane Katrina:

*General Higher Education Impacts**

- \$2+ Billion in Physical Damage
- 33 Colleges/Universities directly impacted
- Over 500 indirectly impacted
- Private colleges more severely felt the pain due to ineligibility for FEMA/Federal post-disaster assistance
- Insurance will cover only part of the costs!



*Source: Chronicle of Higher Education



Why Consider Program Accreditation?

.... A Fundamental Question

- ☐ Mandated by Laws or Regulations
- ☐ Request by Senior Campus Leadership
- ☐ Performance of Due Diligence
- ☐ Can Be A *“Marketplace Advantage”*



More Reasons *Why*?

- ☐ Long Time Since We Had a Disaster
- ☐ We Strive for Excellence!
- ☐ Other Campus programs are Accredited
- ☐ Bragging Rights? (*“seal of approval”*)
- ☐ A recent Crisis on Your *-or another* – Campus
- ☐ Understanding that mitigation forms the basis for all EM programs

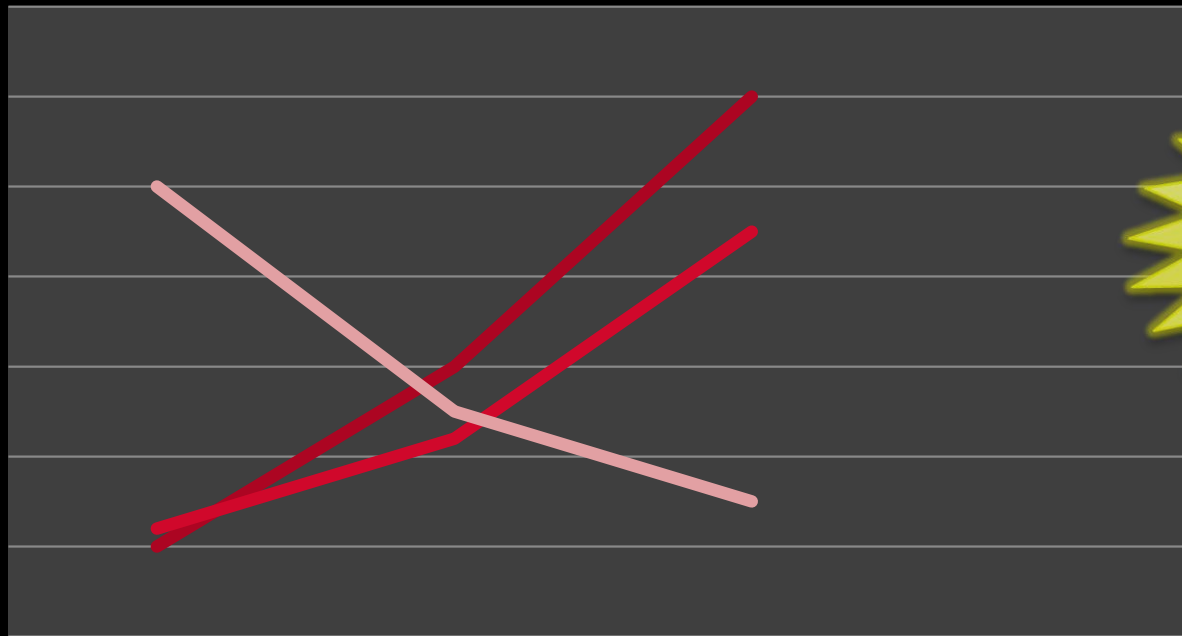


WHY: Benefits of Accreditation/Assessment**



Campus EM Accreditation: Why Here and Why Now??

Increased Accountability Demands It!



Past

Present

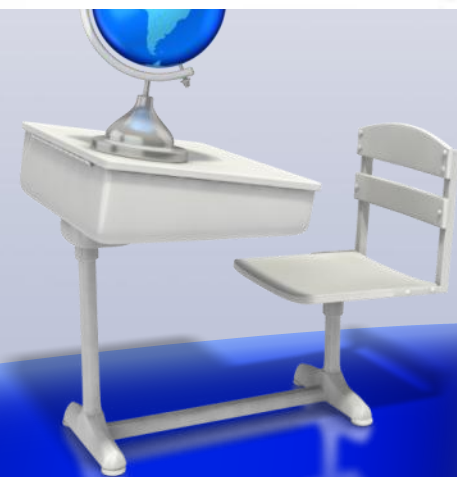
Future

— Disasters — Public Need — Funding

We are at a
Crossroads!



Can You Measure Your Campus Preparedness?

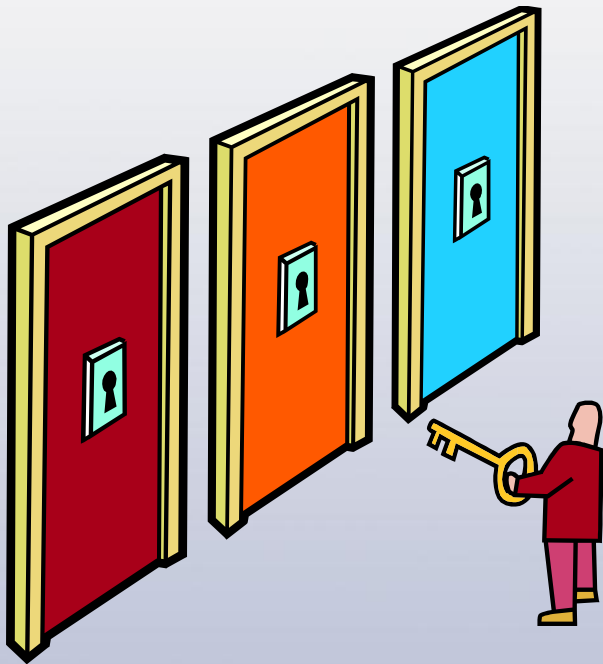


WHAT Programs are Even Out There?**

1. NFPA 1600

2. EMAP

3. PS-Prep

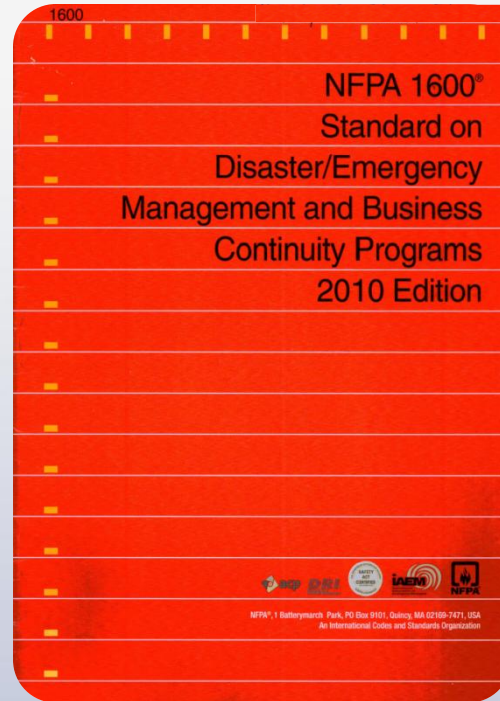
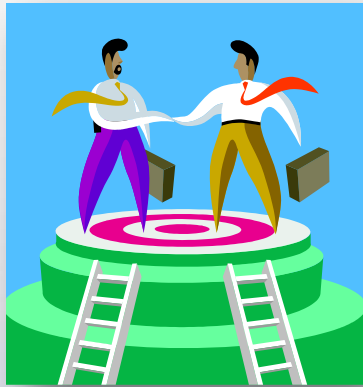


1. NFPA 1600: The International Standard for Emergency & Disaster Management

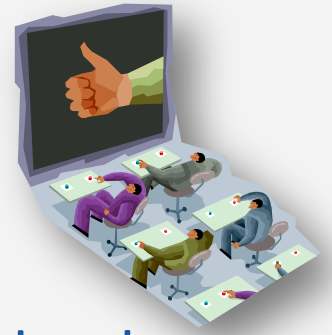
*A “Primer” on this Often
Misunderstood Standard*



NFPA 1600 is a Consensus Standard



The NFPA 1600 Standard



NFPA 1600 has been endorsed by:

- Department of Homeland Security (DHS) and Federal Emergency Management Agency (FEMA)
- International Association of Emergency Managers (IAEM)
- American National Standards Institute (ANSI)
- Disaster Recovery Institute (DRI)
- Association of Contingency Planners (ACP)
- *National Emergency Management Association **



The NFPA 1600 Standard

“The experience of the private sector in the World Trade Center emergency demonstrated the need for these standards...”

*...ANSI {recommended} that the Commission endorse a voluntary National Preparedness Standard... **Recommendation:** We endorse the American National Standards Institute's recommended standard [NFPA 1600] for private preparedness”*

– “9/11 Commission”

- NFPA 1600 is one of 3 standards for the new PS-Prep Program (US Public Law 108-458 in 2004 and Public Law 110-53 in 2007)



History of the Standard

- 1991 – Disaster Management Committee established
- 1995 – “Recommended Practice” issued
- 2000 – The First “Standard” issued
 - Approved as an American National Standard (ANSI)



History of the 1600 Standard *cont...*

- 2004 – Edition of NFPA 1600
 - Through ANSI, vetted with over 2,000 organizations
 - 9/11 Commission Recommends NFPA 1600 for private sector preparedness
- 2007 – 3 year revision published
- 2010 – Current edition being applied
- Present – Review and revision for 2013 edition has already begun!



NFPA 1600 Structure – 2010 Edition

Chapter 1: Administration

Chapter 2: Referenced Publications

Chapter 3: Definitions

Chapter 4: Program Management

Chapter 5: Planning

Chapter 6: Implementation

Chapter 7: Testing and Exercises

Chapter 8: Program Improvement

Annexes



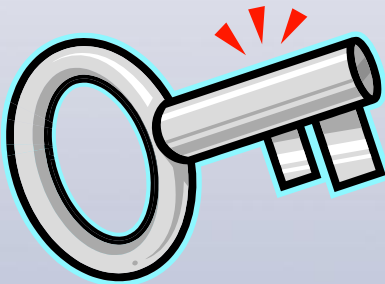
NOTE: The Actual Standard is only 6-pages long!

Mitigation is
a major part
of Ch. 5



Important Note on NFPA 1600

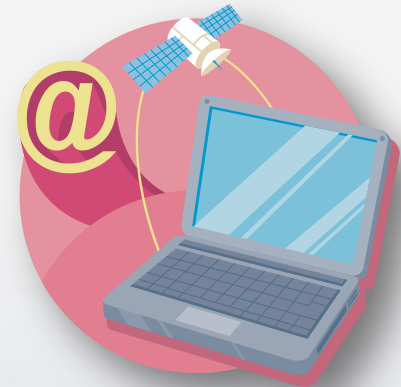
1600 is an international
standard but it is not
an accreditation
program!



Get Your FREE copy Now!

Online at:

www.nfpa.org/

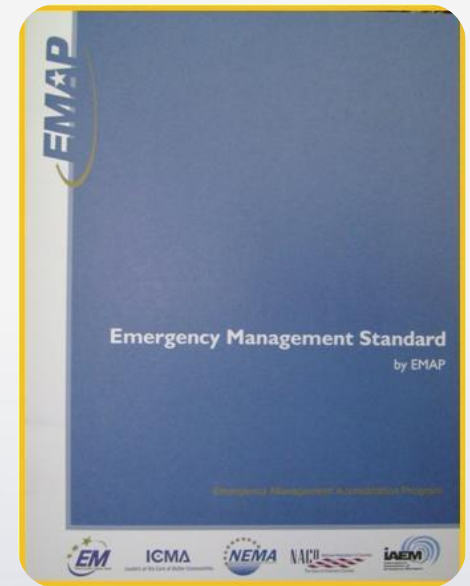


2. EMAP: The Emergency Management Accreditation Program



What Is The EMAP Standard?

- Developed by state & local EM professionals
- EMAP standards are scalable
- Identify components for a quality Program
 - Like NFPA 1600, they don't prescribe HOW
- Viewed as the framework for a comprehensive Program



Determining Compliance

- Policies
- Procedures
- Rules
- Laws
- Regulations
- Directives
- Orders
- Memoranda
- Records
- Logs
- Grants
- Reports
- Files
- Financial reports
- Ledgers
- Budgets
- Training records
- Photographs
- After action reports
- Operational forms
- Plans
- Databases



Resources & Tools

- *Emergency Management Standard by EMAP*
- *Candidate's Guide to Accreditation*
- EMAP Program Assessment Tool
- *Accreditation Process Guide*
- EMAP website, www.emaponline.org
- New IHE Pilot Program**



WHO Can Apply for the IHE Pilot Program

- Put simply, ANY US-based College or University Campus!
 - Public, Private (For-Profit or Not-for-Profit)
 - Traditional or even “virtual” (*i.e, University of Phoenix*)
 - Must be currently academically-accredited by a regional accreditation body
 - Preference given to IHE’s who has at least a baseline of EM efforts (\$ issue)
 - Application must be endorsed by a Senior-level Administrator to be considered.



“Challenges” of Applying EMAP to an IHE Environment

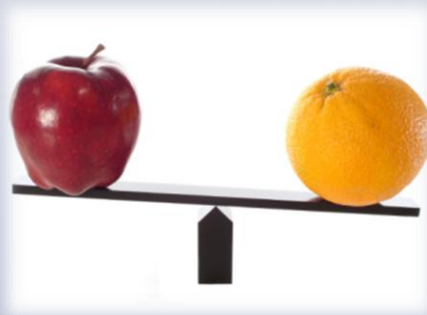
An IHE is
NOT a city
or State!

THE EMAP STANDARD

- Jurisdiction (city, state) is pretty clear-cut
- Must have an oversight Committee
- Program authority based State and Local government laws
- Continuity of Government: Easy
- Definition of “Public” clear-cut

IHE “WRINKLE”

- How to Handle multiple campuses or a “system”
- Committees are NO PROBLEM for IHEs!
- How to handle private IHE’s?
- COG = More difficult to define
- Who is an IHE’s “public”?

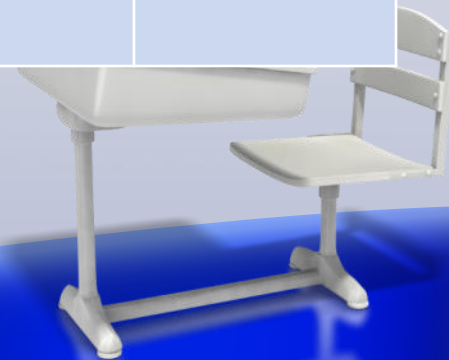


Considerations for Pilot Selections

Our Best Attempt will be to Select 4 “representative” IHEs

Factor	College 1	College 2	College 3	College 4
Public/Private/For-Profit	Public	1254	1254	1254
Urban/Rural/Suburb	Urban	Rural	Suburb	Rural
2-year/4-year Degree	4	4	2	4
Multiple Campuses?	Y	N	N	N
Research/Hospital?	Y/Y	N/N	N/Y	N/N
Daily Population	50,000	1,500	23,000	18,000
Special Considerations	Y	N	Y	N

EXAMPLE



WHERE Do I Apply for the EMAP IHE Pilot?

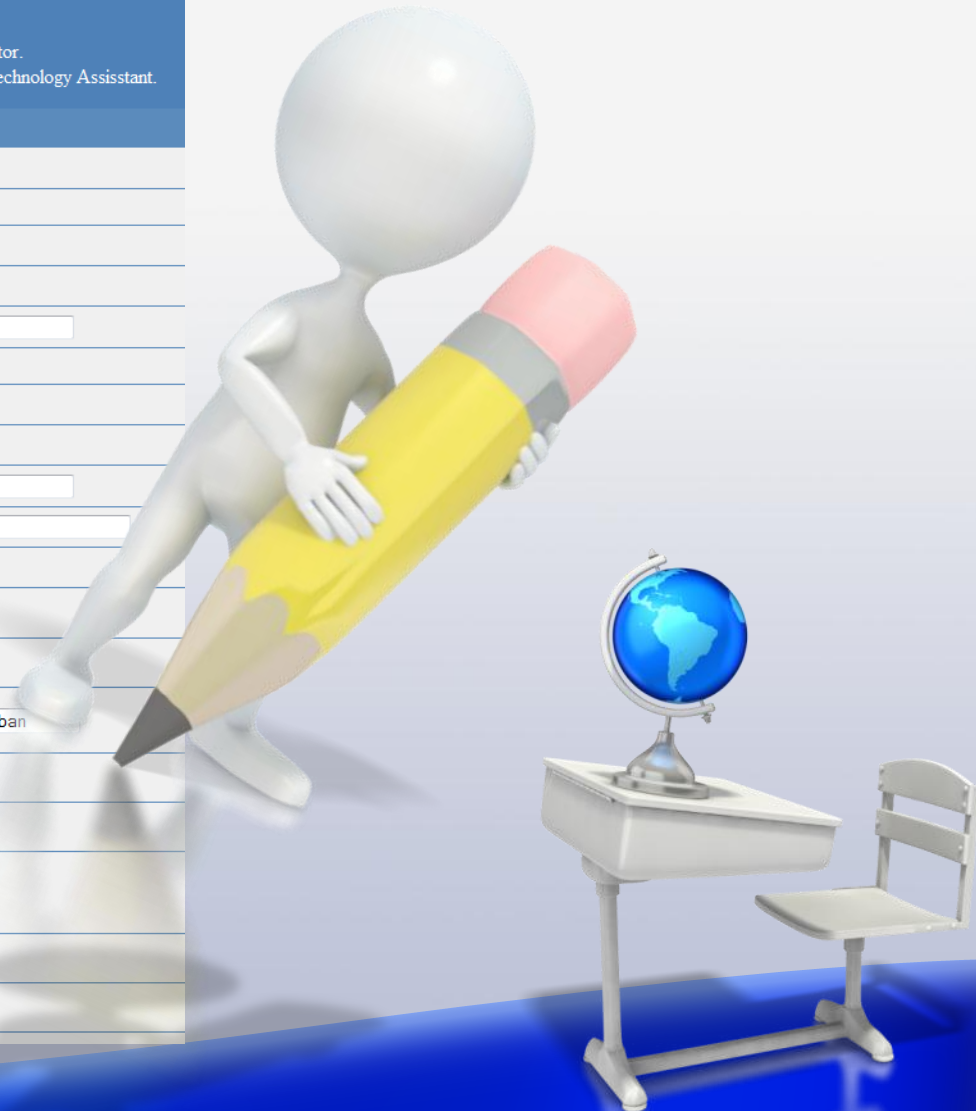
Its easy: Online at <http://emaponline.org>

All Fields are required, please try to answer all questions to the best of your ability.

Please direct any questions about the pilot application process to [Nicole Ishmael](#), EMAP Executive Director.
For problems with this form or the EMAP website please contact [Jarad Downing](#), EMAP Training and Technology Assistant.

Higher Education Request for Pilot Assessment

Program Name:	<input type="text"/>			
Program Mailing Address				
Address 1:	<input type="text"/>			
Address 2:	<input type="text"/>			
City:	<input type="text"/>	State:	AK ▾	Zip: <input type="text"/>
Program Physical Address				
Address 1:	<input type="text"/>			
Address 2:	<input type="text"/>			
City:	<input type="text"/>	State:	AK ▾	Zip: <input type="text"/>
Telephone:	<input type="text"/>	Fax:		<input type="text"/>
Website:	http:// <input type="text"/>			
Program Director's Name:	<input type="text"/>			
Program Director's Title:	<input type="text"/>			
Designation:	Public ▾	Primary Campus Location:	Urban	
FEMA Geographic Region:	Region I ▾			
Highest Degree Conferred:	2-Year Degree ▾			
Average Weekday Population Of Campus/Campuses being Assessed:	Up to 2500 ▾			
Maximum Special Event Population:	Up to 5000 ▾			
Residential Campus Type:	Primary Residential ▾			



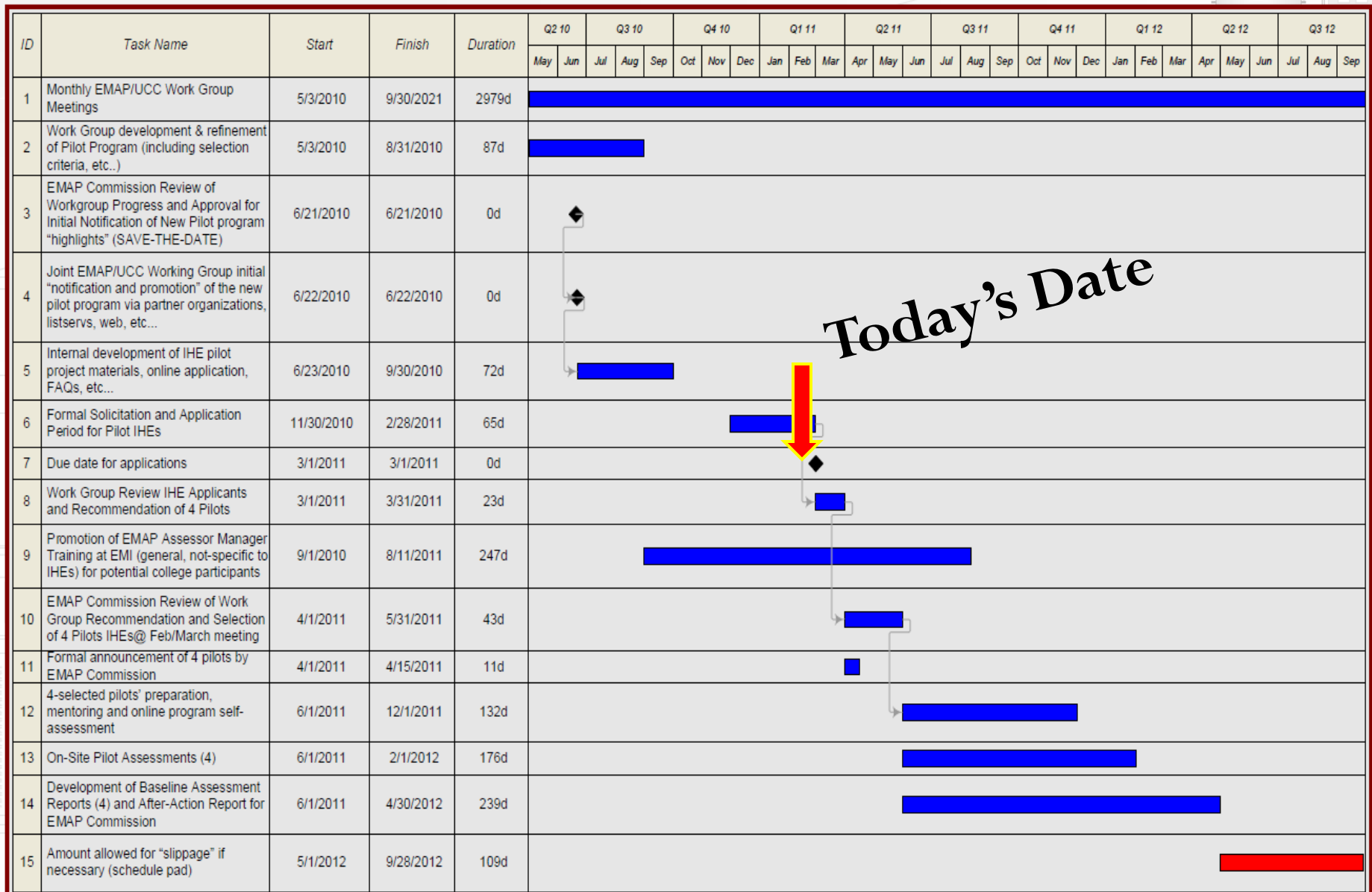
WHEN Are the Deadlines?

- Online “applications” due **March 1, 2011**
- EMAP/UCC Work Group Review / Recommendations
- EMAP Commission Selects 4 Pilots by **April 15, 2011**
- On-Site Pilot Assessments, **June 2011 – January 2012**
- After-Action Report evaluation IHE applicability for nationwide roll-out, **April 30, 2012**



College/University EMAP Pilot Project Timeline

Updated: 12/3/2010



If Selected, How Can My IHE Prepare for the EMAP IHE Pilot?



- Survey campus leaders, senior Administration and critical decision-makers and emergency responders to gauge interest
- Evaluate your overall global interest in putting your program “under the microscope” for a critical evaluation.
- Receive innumerable benefits from the experience of self-discovery (the core of most IHE’s missions)!



Is There a Cost as an EMAP IHE Pilot?

That's the beauty of it, if selected for one of the 4 pilot assessments, your direct-cost* is....

Free!



* Some restrictions apply. Not valid in South Dakota, Virgin Islands or the District of Columbia or Guam. Just kidding!

3. PS-PREP

FEMA selects standards for preparedness, security management, and continuity

- A voluntary program designed to enhance national resilience in an all hazards environment by improving private sector preparedness



DHS appoints FEMA to implement Title IX

- Create the program
- Select the standards
- Oversee certification of private companies

Target: 2010 – Q4



DHS Directives for PS-Prep



Private sector preparedness program that:

- Is voluntary
- Engages key stakeholders in development of the program
- Is administered by third party organizations with experience and expertise in managing and implementing voluntary accreditation and certification programs
- Designates one or more preparedness standards
- Integrates/recognizes existing industry efforts, standards, practices and reporting on preparedness
- Gives special consideration to small business— Protects proprietary and confidential company information



NFPA 1600: 2007 (& 2010)	Standard on Disaster/Emergency Management and Business Continuity Programs
BS25999: 2007	Business Continuity Management
ASIS SPC-1: 2009	Organizational Resilience: Security, Preparedness, and Continuity Management Systems

Designated PS-Prep Standards



<u>Key Issue</u>	<u>NFPA 1600:2007</u>	<u>BS 25999 Pt.2</u>	<u>ASIS SPC.1: 2009</u>
Major Focus	Emergency Management and Tactical Activities	Business Continuity and Operations	Organizational Resiliency and Operations
National Standard	Yes – ANSI Standard (U.S.)	Yes – BSI Standard (U.K.)	Yes – ANSI Standard (U.S.)
International Perspective	Viewed as an American Standard	Viewed as an International Standard	Unknown – too new for opinions
General Acceptance	Popular – primarily in North America	Popular – outside the U.S. with good penetration in Asia/Pacific	Very New Standard – little market penetration
ISO Alignment	No – Element-based model. Does not use a Management System.	Yes – Process Model. Uses a Management System (PDCA)	Yes – Process Model. Uses a Management System (PDCA)
Supporting Methodology	DRI International: 10 Professional Practices	Business Continuity Institute Professional Practices	No specific methodology alignment
Unique Elements	Addresses NIMS and ICS Models for Emergency Planning	Introduces concept of MTPOS and drops RPO metric	Safety Act Approved; Contemplates 1 st and 2 nd party reviews; Some accommodation for Chain of Custody issues
Certification Available	No	Yes, through UKAS accredited CBR's	No



Who

Should you Be Bringing to the Table?

- Internal Campus Stakeholders*
 - Campus Leadership
 - Campus Public Safety Organizations
 - Student Life
 - Communications
 - Facilities, Medical, Infrastructure
 - Budget/Finance and Human Resources
 - *Students?*
 - Other





Should you Be Bringing to the Table?

(cont...)

Who

- External Stakeholders

- Local Community (City/Town, County, State)
 - Emergency Management
 - First Responders (Fire, Police, Medical Services, Public Works)
 - Business Leadership
- Relief and Social Service Organizations
- Key Vendors and Suppliers
- Neighboring Schools and Universities
- General Public
- *Alumni and Parents?*



When Does a “*Typical*” Accreditation/Assessment Timeline Take Place?

APPLICATION (*days to weeks*)

- Internal campus discussions/consideration of the “Effort” required!

SELF-ASSESSMENT (*weeks to months*)

- Review/document your IHE’s efforts on meeting the Standards

ON-SITE REVIEW and AUDIT (*~1-2 weeks*)

- Usually with Professional or Peer Reviewers

RECEIVE FINAL REPORT

- Review Findings and Make Changes to Address Deficiencies

HOW Can I Best Prepare for Accreditation?

or

“There is no Way We can Expect to become Accredited!!”





Let's Remember the Overall Goal of any EM Accreditation Program

To Build a Safer Campus Through
Measureable Standards of Excellence
that is Recognized by your Peers



Remember: Metrics & Accreditation Helps You Avoid the Dilbert Principle

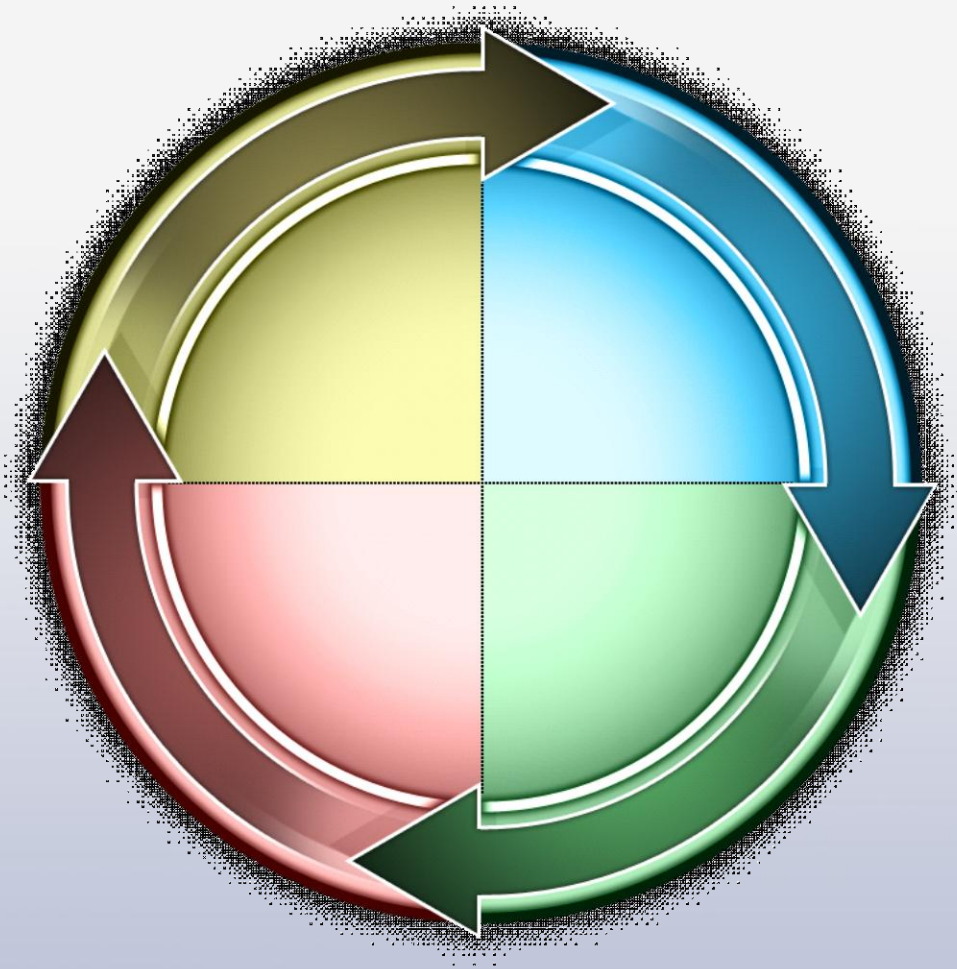


**SO, WHERE IS THE EM
HOLY GRAIL FOR MY IHE??**



Most Importantly....

Don't Reinvent the Wheel!



You are Not Alone! FREE Peer Resources

- IAEM Universities and Colleges Caucus
(www.iaem.com/Committees/College/)
- Disaster Resistant Universities email listserv
(www.em.uoregon.edu/info/prepare10/)
- Disaster Resilient University (DRU) community on DHS
First Responder Communities of Practice
(<https://communities.firstresponder.gov/>)





*As in general
mitigation planning,
while **YOU** may be the
lead, you will only be
successful if you involve
others throughout the
process... one that
never ends!*



IHE Accreditation Summary in 1-Slide



walk



Crawl



RUN!



For More Information

Steve Charvat, CEM, MPA

EM Director

University of Washington

Box 359531

Seattle, WA 98195-9531

206-897-8080

charvat@uw.edu

